



Dan Wesson Firearms Small Frame Revolver series



Instruction Manual

Dan Wesson

DAN WESSON FIREARMS®

Model and Serial Number Information

For your convenience, please record the following information.

DAN WESSON FIREARMS Handgun Model: _____

Serial Number: _____

Barrel Length: _____ Caliber: _____

Date of Purchase: _____

Purchased From: _____

Receipt or Invoice Number: _____

Address: _____

City: _____

State: _____ Zip: _____

DAN WESSON FIREARMS

5169 State Hwy 12, Norwich, NY USA 13815

Phone: 607-336-1174 • Fax (607) 336-2730

Website: www.cz-usa.com • Email: dwservice@cz-usa.com

DWEC.60805.1

Dan Wesson Firearms

REVOLVER INSTRUCTIONS MANUAL

SMALL FRAME MODELS

NOTICE:

CZ-USA & Dan Wesson Firearms shall not be responsible for injury, death or damage to property resulting from intentional or accidental discharge of this firearm, or from its use in a manner for which it was not designed. Dan Wesson Firearms will not honor claims involving this firearm which result from careless or improper handling, unauthorized adjustment, alteration, corrosion, neglect, the use of improper caliber ammunition, the use of ammunition other than original high quality commercially manufactured ammunition in good condition, or any combination thereof. Dan Wesson Firearms will not honor claims involving this firearm for any reason when claims are made by a subsequent owner.

IMPORTANT:

Before leaving the factory, this firearm was carefully tested, inspected, and packaged. Please examine the firearm at the time of purchase to make sure it is unloaded and undamaged as Dan Wesson Firearms cannot control the handling of this product after it leaves the factory. The dealer will be pleased to assist you in making this examination and will answer any questions.

FEATURES

1. VERSATILITY:

This instruction manual should always accompany this firearm and be transferred with it upon change of ownership.

The Dan Wesson revolver is much more versatile than the usual single purpose firearm and can be adapted to handle a variety of shooting situations in a manner of minutes.

Barrel: Dan Wesson revolvers provide the ultimate in interchangeability of barrel lengths and shroud styles because they can be replaced by the users themselves, without the machining, fitting, or special equipment necessary to change the barrels on other revolvers.

Frame: The ejector rod and latch are located at the front of your Dan Wesson revolver. This positioning keeps the latch out of the way of your thumb while shooting and makes a more positive lock where the barrel meets the cylinder.

Grip: You may change your Dan Wesson revolver from a square to a round butt style by simply changing the grip. There are several styles of grips and woods available, all inter-changeable.

Rear Sight: Your Dan Wesson revolver is equipped with a rear sight which is fully adjustable for elevation and windage.

Front Sight: All Dan Wesson target revolvers are equipped with interchangeable, colored front sight blades for increased accuracy in any shooting situation Target (Patridge) and fiber optic sights are also available.

2. DESIGN:

The Dan Wesson revolver was designed with an eye toward simplicity and interchangeability. Utilizing modern machine methods, we are able to control tolerances to produce parts to exact engineering specifications resulting in a creep-free single action and a fast, short double action.

3. SAFETY:

The Dan Wesson revolver incorporates an automatic safety device that prevents the hammer from striking the firing pin connector unless the trigger is retracted and held in the firing position. If during cocking the revolver, the hammer were to slip from your thumb, or if the revolver is dropped on the hammer spur, the revolver will not fire provided the trigger is not in the firing position.

During the normal firing cycle, the safety connector is positioned between the hammer and firing pin. When the hammer moves forward, it strikes the connector, which transfers its energy to the firing pin to fire the revolver. However, if the trig-

ger is released before the hammer is cocked, either single or double action, the safety connector will be withdrawn to prevent the hammer energy from being transferred to the firing pin.

4. ACCURACY:

The accuracy of the Dan Wesson revolver has been well established. Superior accuracy is achieved by virtue of the basic design of the Dan Wesson revolver. It is the only revolver in which the barrel is secured at both ends and always under tension. The cylinder latch is located up front to ensure proper position of cylinder to barrel and the barrel itself is flat and square with the bore.

5. CONSTRUCTION:

The frame is of the finest investment cast steel. The single piece construction of the grip is durable and offers protection to the steel frame otherwise exposed to corrosive salts from the user's hands. In addition, the one piece grip is less likely to split or break.

SAFETY INSTRUCTIONS

TO FULLY AND SAFELY ENJOY SHOOTING YOUR DAN WESSON REVOLVER, WE URGE YOU TO CAREFULLY READ THIS ENTIRE INSTRUCTION BOOKLET BEFORE ATTEMPTING TO LOAD AND USE THIS FIREARM.

CAUTIONS:

1. Always treat your revolver as if it were loaded so that it's never fired accidentally when thought to be unloaded.
2. Never point your revolver at anything you do not intend to shoot; if fired accidentally injury, death or damage to property can occur.
3. Even when chambers of the cylinder are empty. Keep fingers off the trigger and gun pointed in a safe direction.
4. Before loading be sure barrel and cylinder chambers are clear of obstructions. If obstructions are observed, clean revolver immediately.
5. Never pull trigger or place your finger in the trigger guard until you are aiming at a target and ready to shoot.
6. Always keep the hammer forward and cham-

bers empty until ready to shoot to eliminate risk of accidental discharge.

7. Always be absolutely sure of your target and the area behind it before you squeeze the trigger. A bullet could travel past your target up to two miles.

8. Never shoot at a hard surface such as a rock, a tree, or a liquid surface such as water, a bullet may ricochet in any direction to strike you or an object you cannot see, causing injury, death or damage to property.

9. Make sure your backstop is adequate to stop and contain the bullet before beginning target practice.

10. When group firing, always have someone in charge to maintain safety control. Obey his commands immediately.

11. When carrying your revolver on a range, it should be empty and the cylinder should be open until prepared to fire. Keep revolver pointed toward the backstop when loading, firing and unloading.

12. Never leave a loaded revolver unattended. It may be fired accidentally causing injury, death or damage to property.

13. If your revolver fails to function properly, stop firing immediately. Do not force a jammed cylinder mechanism, as a round may explode causing serious injury, death or damage to your revolver.

14. Never leave your revolver loaded, cocked and ready to fire. This is extremely dangerous, as the revolver could be accidentally discharged causing injury, death or damage to property.

15. Always check barrel condition prior to shooting and after every 100 rounds.

16. Always hold your revolver by the grip and keep both hands well clear of and behind the cylinder. Never hold it near the cylinder as very hot gasses and lead particles may be sprayed out around the cylinder, causing injury to your hands.

17. To eliminate the risk of accidental discharge, never walk, climb or follow a companion with your revolver cocked, ready to fire, or with the hammer in any position other than forward. When hunting, hold your revolver so that you can always control the direction of the muzzle, even if you slip and fall.

18. Always unload your revolver before allowing anyone else to handle it.

19. Never tack a target to a live tree as the bullet may rebound back directly at you or someone near you.

20. Never drink alcoholic beverages or take drugs before or while shooting.

21. Always seek a doctor's advice if you are taking medication to be certain you can handle your revolver safely.

22. Always wear ear protection when shooting or when in the vicinity of others who are shooting. Repeated exposure to high noise levels could lead to long term hearing loss.

23. Always wear protective shooting glasses while shooting or in the range area.

24. Always make sure your revolver is not loaded before cleaning, storing, traveling or changing barrels, Always open cylinder before laying revolver down or handing to another person.

25. Always store your revolver and ammunition in separate, locked containers, out of sight and reach of children,

26. Always instruct children to respect firearms.

27. If you teach children to shoot, teach them to use the revolver properly and always supervise them closely. Always stress safety to avoid any possibility of accidental injury, death or damage to property.

FUNCTION

The Dan Wesson revolver can be fired either single action by cocking the hammer with the thumb and then squeezing the trigger to release the hammer or double action, by pulling the trigger to cock the hammer and fire. Use of either method does not change the functioning sequence of the mechanism. When the hammer is moved rearward, the bolt is moved, unlocking the cylinder and allowing it to rotate and the connector is moved into position behind the firing pin. Approximately half-way to the full-cock position (either single or double action), the bolt is released and enters the lead-in notch of the cylinder. The cylinder continues to rotate until the bolt drops into the locking notch, aligning the chamber, barrel and firing pin. In single action operation, the hammer will reach a cocked position and

remain in this position until the trigger is squeezed, releasing the hammer and firing the revolver. When firing double action the movement of the trigger cocks the hammer and continued movement then releases it at the proper locked cylinder position releasing the trigger causes the connector to be withdrawn, preventing firing pin contact.

SAFE OWNERSHIP THE NEED FOR INSTRUCTION

- Possession of this or any firearm indicates your acceptance of responsibility to comply with the law and prevent consequences of danger, which can result from improper handling.
- DAN WESSON FIREARMS strongly recommends that every person receive complete and thorough instruction on the safe and proper use of firearms from a competent instructor before handling this or any other firearm.
- Those unfamiliar with firearms should not remove this DAN WESSON FIREARMS product from its packaging until successfully completing a full course of instruction by a competent instructor on the safe use and handling of firearms with an emphasis on revolver type handgun safety.
- Information on qualified instructors in your area may be obtained by consulting your local law enforcement authorities, a firearms retailer or through local gun clubs.
- Additional sources on firearms safety and instruction can be obtained by writing to national organizations, such as the United States Practical Shooting Association (USPSA - 903-A Metcalf Street, Sedro Woolley, WA 98284, or the National Rifle Association (NRA - 11250 Waples Mill Road, Washington, DC 22030, (703) 267-1430). www.nra.org and www.nrahq.org/education/guide.asp

LOADING

CAUTION: USE ONLY ORIGINAL, HIGH QUALITY, COMMERCIALY MANUFACTURED AMMUNITION IN GOOD CONDITION, APPROPRIATE TO THE CALIBER OF YOUR REVOLVER.

AMMUNITION: Dan Wesson .357 Magnum revolvers are chambered to fire .357 Magnum

cartridges and will also accept and fire .38 Special cartridges, interchangeably. The Dan Wesson .38 Special revolvers are chambered for .38 Special cartridges only and will not accept the .357 Magnum. Dan Wesson .22 L.R. revolvers are chambered for .22 Long Rifle cartridges and will also accept .22 Long and .22 Short cartridges. Dan Wesson .22 magnum revolvers are chambered for .22 Win. Magnum cartridges only. Dan Wesson .32 Magnum revolvers are chambered to fire .32 Magnum cartridges and will also accept the .32 S&W Long and .32 Colt new police cartridges interchangeably. Dan Wesson .32-20 revolvers are chambered for .32-20 cartridges only.

CAUTION:

1. Before attempting to load your revolver, read the safety Instructions and be fully familiar with the operation of this revolver.

DO NOT LOAD LIVE AMMUNITION INTO THE REVOLVER UNTIL READY TO SHOOT

2. Examine the revolver before use by moving the cylinder latch down and pushing the rear of the cylinder out to the left side of the frame.

a. Check each of the chambers to make sure they are clean and free from accumulated oil or grease. Clean it as necessary.

b. Check the barrel bore for cleanliness and remove any oil or grease.

c. Close cylinder and check for proper latch operation and lock up.

d. Insert barrel/cylinder gauge in place between face of cylinder and rear of barrel to determine if proper .006" gap exists. You should feel light pressure against the gauge, but it should be possible to move gauge side to side. If proper gap is maintained between barrel and cylinder, proceed to loading instructions. If gap is tight or excessive, proceed to barrel changing instructions and adjust barrel cylinder gap accordingly.

WARNING: THE BARREL/CYLINDER GAP IS CRITICAL. EXCESSIVE GAP, NOT TO GAUGE, CAN CAUSE LEAD SPITTING

LOADING INSTRUCTIONS

1. Do not load live ammunition until you intend to shoot.
2. Keep revolver pointed in a safe direction.
3. Open cylinder by moving latch down and pushing the cylinder to left out of the frame opening.
4. Using only ammunition recommended in this booklet, insert one round of ammunition into each of the chambers, seating fully.
5. Keeping revolver pointed in a safe direction, make sure hammer is not cocked and push cylinder into the frame until latch springs up into locked position.
6. Rotate cylinder by hand until bolt drops into locking notch, positioning the chamber and barrel. If cylinder cannot be turned, and bolt is in locked position, the revolver is ready for firing.

IMPORTANT: DO NOT ATTEMPT TO CLOSE THE CYLINDER WITH THE HAMMER COCKED AND DO NOT SLAM YOUR CYLINDER CLOSED FORCEFULLY, AS DAMAGE TO THE MECHANISM COULD RESULT

UNLOADING INSTRUCTIONS

1. Keep revolver pointed in a safe direction and do not touch the trigger.
2. Open cylinder by moving latch down and pushing cylinder open.
3. Push ejector rod backward, forcing out all empty cases or live rounds. When chambers are clear, allow ejector rod to return to its forward position under spring pressure.
4. Make sure hammer is not cocked and push cylinder back to closed position.
5. Collect live ammunition for safe storage and dispose of empty cartridge cases.

SHOOTING

Before firing, practice with your revolver UNLOADED to develop stance, aim and trigger control. The Dan Wesson revolver may be dry fired (functioned without cartridges) to develop your shooting skills without any damage to the revolver. Dry firing is NOT recommended for .22 caliber revolvers unless snap caps are used.

FIRING

To fire single action:

1. Hold revolver by grip, keeping finger away from trigger. Using thumb, draw hammer fully back to the cocked position where it will remain (see Figure 2).
2. Remove thumb from hammer spur.
3. Take aim by aligning the target with front and rear sights (see Figure 1).
4. Keeping steady aim, place index finger on trigger and squeeze gently until hammer falls.
5. To fire remaining rounds, remove finger from trigger, cock hammer as described in Step 1, and continue in successive steps.
6. Upon completion of firing, unload as described in previous section.

To fire double action:

1. Hold revolver by grip, keeping fingers away from hammer. Aim by aligning sights, and using steady smooth pressure, pull trigger until hammer is cocked and released, firing one round.
2. Remaining rounds are fired by releasing the trigger and pulling smoothly again to fire each successive round.

CAUTION: IF REVOLVER FAILS TO FIRE, HOLD IT, KEEPING MUZZLE POINTED TOWARD TARGET, AND WAIT FOR 30 SECONDS. IF A HANGFIRE (SLOW IGNITION) HAS OCCURRED, THE CARTRIDGE WILL GENERALLY FIRE WITHIN 30 SECONDS

If the cartridge does not fire, eject cartridge (using the unloading procedure instructions) and examine the misfired cartridge case. If firing pin indent in primer is light, misaligned, or non-existent, have revolver examined by a competent gunsmith. If primer indent appears normal as judged by previously fired cartridges), assume faulty ammunition. Remove misfired cartridge from other live ammunition and dispose of in accordance with ammunition manufacturer's instructions.

UNCOCKING

To uncock your loaded revolver with hammer in single action cocked position, place thumb of the

hand not holding the revolver, between hammer and frame. Hold hammer back firmly with the other thumb and pull trigger only enough to allow the hammer to move forward to clear the cocking notch. Then release the trigger completely, remove thumb from between hammer and frame, and lower the hammer gently to rest on the frame.

In the double action mode, a partially cocked hammer is lowered by gradually releasing the tension on the trigger slowly.

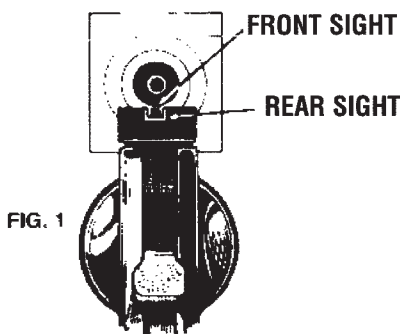


FIG. 1

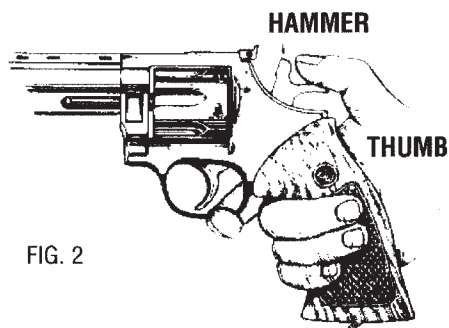


FIG. 2

COCKING-SINGLE ACTION

CAUTION: Keep Finger Clear of Trigger During Cocking

Maintenance

CAUTION: BE SURE REVOLVER IS NOT LOADED BEFORE ATTEMPTING TO CLEAN, CHANGE BARREL OR SERVICE YOUR REVOLVER.

CLEANING

Your Dan Wesson revolver should be kept clean and lightly oiled. Powder residue can easily be

removed by scrubbing out the barrel and chambers with any commercially available gun solvent and a soft bristle brush,

Barrel leading (caused by firing soft lead bullets) and residue from jacketed bullets can be removed using solvent and a brass wire brush. Always push brush or cleaning patch completely through barrel or chambers before reversing direction to prevent the possibility of brushes or patches becoming lodged in the bore or chamber.

The cylinder center hole and the upper crane leg should be cleaned at approximately 2000 rounds or whenever cylinder rotation becomes sluggish. After brushing, run a lightly oiled flannel patch through the bore and chambers; followed by a dry patch to remove excess oil.

Note: Wipe exterior surfaces of revolver with a lightly oiled patch or cloth after handling to prevent corrosion from body salts and moisture.

STORAGE

Always unload your revolver and store revolver and ammunition in separate, locked containers out of sight and reach of children.

Note: Do not store in an airtight container and do not seal barrel or chambers to keep out dust, since trapped, moisture laden air can cause corrosion.

CHANGING BARREL ASSEMBLY

CAUTION: BE SURE REVOLVER IS NOT LOADED BEFORE ATTEMPTING TO CHANGE BARREL.

1. Assemble the barrel wrench to the barrel nut in the muzzle of the barrel.
2. Unscrew and remove the barrel nut.
3. Remove shroud by sliding forward off the barrel.
4. Unscrew the barrel from the frame.
5. Screw new barrel with end containing most thread into the frame
6. Insert .006" feeler gauge against the front of the cylinder and screw barrel into frame until there is a slight pressure against the feeler gauge.
7. Keeping the gauge in place, install new shroud over barrel and locating pin
8. Assemble barrel nut (slots up) using wrench, Tighten so that firm pressure is required to unscrew the nut. **DO NOT OVERTIGHTEN.**

9. Recheck gap between cylinder and barrel by moving gauge, there should be slight pressure against the gauge, but it should be possible to move it without compressing cylinder rearward.

WARNING: THE BARREL AND CYLINDER GAP IS CRITICAL. FAILURE TO USE THE GAUGE CAN CAUSE EXCESSIVE GAS LEAKAGE AND LEAD SPITTING, POSSIBLY CAUSING INJURY

10. Remove feeler gauge.

11. After firing the first six or twelve rounds, recheck for proper gap and barrel nut tightness. Make certain the gun is unloaded for this recheck.

12. If the barrel nut is too tight, making removal difficult, use the following procedure: Be sure revolver is not loaded before attempting to tree barrel nut.

a. With wrench assembled to the barrel nut, press muzzle of the gun and wrench firmly against the edge of a bench and turn revolver counter clockwise.

b. With wrench assembled to the barrel nut, using a mallet, tap back of wrench sharply to loosen nut.

SIGHTS

REAR SIGHT

The Dan Wesson target models incorporate an adjustable rear sight. To adjust, turn windage screw clockwise to move the sight notch to the right, counterclockwise to move notch to left. Turn elevation screw clockwise to lower sight; counterclockwise to raise sight. Point of impact of bullet will move in the same direction as the movement of the rear sight.

CAUTION: DO NOT REST THE REVOLVER AGAINST A SOLID OBJECT WHEN SHOOTING OR SIGHTING IN, SINCE DAMAGE CAN OCCUR TO THE GRIP CAUSING INJURY TO THE HANDS.

FRONT SIGHT

CAUTION: BE SURE REVOLVER IS NOT LOADED BEFORE ATTEMPTING TO CHANGE FRONT SIGHT BLADES

To change front sight blades, unscrew the front sight retaining screw (40) at the end of the shroud, approximately one-eighth of an inch. Push the front sight blade forward and lift up removing from the shroud. To install a new blade, place rear dovetail on bottom of sight blade under front sight pin (6) and retighten the retaining screw.

Note: Do not over tighten retaining screw.

GRIPS

CAUTION: BE SURE REVOLVER IS NOT LOADED BEFORE ATTEMPTING TO CHANGE GRIPS.

To change grip, unscrew the grip screw (52) on bottom of grip. Slide grip off tang and remove screw from grip. Slide replacement grip on tang and replace screw. Tighten only until grip is snug and free from any movement.

SERVICING AND REPAIR

FACTORY SERVICE

Always unload any firearm before packaging the firearm for repairs or service. Never ship ammunition with any firearm.

REQUESTING FACTORY SERVICE...

Should your DAN WESSON handgun require service by the factory technicians, please contact DAN WESSON firearms and discuss that problem you're having. In the event you must return your handgun to the factory for service, follow these shipping instructions.

1. Provide a written statement in as much detail as possible; describe the apparent problem or need for which you wish to have service rendered.
2. Carefully package your DAN WESSON handgun and the written statement inside a sturdy, plain cardboard carton. Use quality protective packing as required to prevent damage to the handgun from movement during shipping.
3. Tape the carton shut securely using quality shipping tape, or use another acceptable method of sealing the carton, to prevent accidental opening during shipment.
4. Be certain to address that package clearly and

include a return address that can receive packages.

5. Insure the package to protect the contents from damage, loss or theft. DAN WESSON FIREARMS cannot be held responsible for damage or loss incurred during shipment.

6. Ship the package via a reputable carrier with package tracking. DO NOT SHIP ANY FIREARM via US MAIL unless you are an FFL dealer.

IMPORTANT

Any repair or parts replacement, with exception of items indicated with an asterisk (*), should be performed by Dan Wesson Firearms. Dan Wesson Firearms will not assume responsibility for proper functioning of this revolver if unauthorized alterations, adjustments or parts replacements with unauthorized parts are made.

TRANSPORTING REVOLVER TO FACTORY

Various federal and state laws and local ordinances govern the transfer and transportation of firearms. To avoid any problems, we recommend that you take the advice of the dealer in your state on how to send or transport your revolver to Dan Wesson Firearms. Before shipping, follow the procedure listed:

CAUTION: MAKE SURE THE REVOLVER IS NOT LOADED.

LIMITED WARRANTY

LIMITED FIVE-YEAR WARRANTY

Dan Wesson Firearms, a part of CZ-USA, are warranted to be free from defects in material and workmanship for (1) year on wooden parts and surface treatment and five (5) years on other parts. Any such defect of which Dan Wesson Firearms is given written notice as provided below within one year and ten days from the date of first purchase by a customer will be remedied by Dan Wesson Firearms without notice.

This warranty is granted by Dan Wesson Firearms, 5169 State Highway 12, Norwich, New York 13815. Warranty claims (in writing) and the firearm concerned should be directed (transportation charges prepaid), to

the Warranty Service Department, Dan Wesson Firearms, 5169 State Highway 12, Norwich, NY 13815.

Warranty claims should state the model and serial number of the gun concerned, a description of the difficulty experienced, and the date of purchase. It is recommended that shipment be insured by owner, since Dan Wesson Firearms will accept no responsibility for loss or damage in transit.

Under no circumstances shall Dan Wesson Firearms or CZ-USA be responsible for incidental or consequential damages with respect to economic loss or injury to property, whether as a result of breach of expressed or implied warranty, negligence or otherwise. Some states do not allow the exclusion or limitation of incidental or consequential damages, so the above limitation may not apply to you. Dan Wesson Firearms or CZ-USA will not be responsible for the

results of careless handling, unauthorized adjustments, defective, low quality, reloaded or improper ammunition, corrosion, neglect, ordinary wear and tear, or unreasonable use. Furthermore, the liability of Dan Wesson Firearms and CZ-USA under this warranty shall be limited solely to the obligation to replace or repair the firearm.

This warranty gives you specific legal rights, and you may also have other rights, which vary from state to state.

PLEASE NOTE: Handguns and long guns are classified as FIREARMS or DANGEROUS WEAPONS. Guns are surrendered by Dan Wesson Firearms with the express understanding that is assumes no responsibility for re-sale handling under local laws and regulations.

Dan Wesson Firearms a part of CZ-USA

Parts and accessories available at:

DAN WESSON FIREARMS

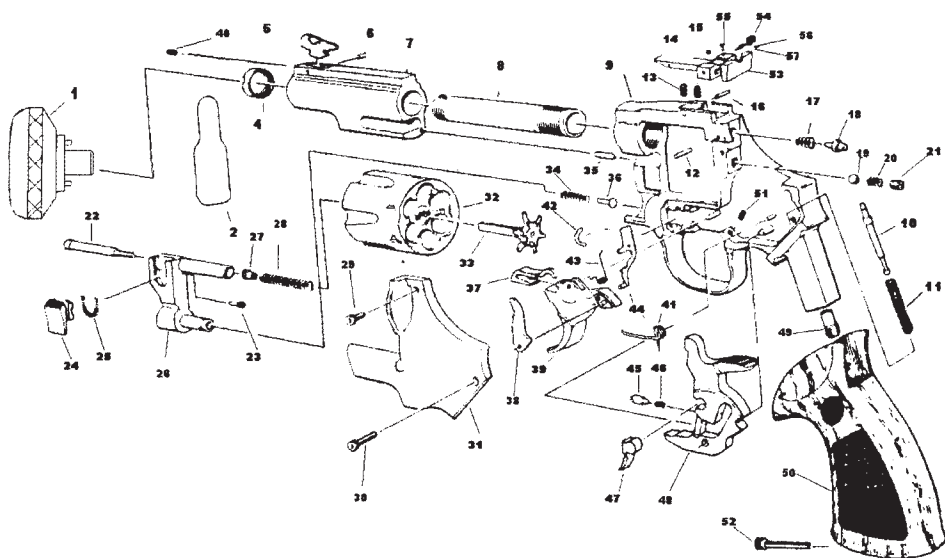
5169 State Hwy 12

Norwich, NY 13815

Phone: 607-336-1174 ext 21

dwparts@cz-usa.com

PARTS ILLUSTRATION



PARTS LIST

- | | | |
|-----------------------------------|------------------------------------|----------------------------|
| 1. Wrench | 19. Cyl. Aligning Ball | 39. Trigger* |
| 2. Gauge, Bbl. | 20. Spring, Cylinder Aligning Ball | 40. Sight Retaining Screw |
| 4. Barrel Nut | 21. Aligning Ball Screw | 41. Trigger Return Spring |
| 5. Front Sight | 22. Ejector Rod | 42. Crane Lock* |
| 6. Front Sight Pin | 23. Latch Retaining Screw | 43. Hand Spring |
| 7. Shroud | 24. Latch | 44. Connector |
| 8. Barrel | 25. Latch Spring | 45. Strut Plunger |
| 9. Frame* | 26. Crane Assembly* | 46. Strut Spring |
| 10. Main Spring Guide | 27. Ejector Rod Bushing | 47. Strut* |
| 11. Main Spring | 28. Ejector Spring | 48. Hammer* |
| 12. Firing Pin Retaining Pin | 29. Short Sideplate Screw | 49. Mainspring Seat |
| 13. Rear Sight Elevation Spring | 30. Long Sideplate Screw | 50. Grip |
| RSA. Rear Sight Assembly Complete | 31. Sideplate* | 51. Trigger Stop Screw |
| 14. Rear Sight Elevation Screw | 32. Cylinder* | 52. Grip Screw |
| 15. Rear Sight Body | 33. Extractor* | 53. Rear Sight Blade |
| 16. Rear Sight Retaining Pin | 34. Bolt Plunger Spring | 54. Windage Screw |
| 17. Firing Pin Spring | 35. Shroud Locating Pin | 55. Windage Screw Retainer |
| 18. Firing Pin | 36. Bolt Plunger | 56. Windage Plunger |
| | 37. Bolt* | 57. Windage Plunger Spring |
| | 38. Hand* | |

Note: * parts are factory replacement only and may need fitting



Models

22/722	.22 long Rifle	Target
22M/722M	.22 Magnum	Target
32/732	.32 H&R Magnum	Target
3220/73220	.32-20 Winchester	Target
15/715	.357 Magnum	Target

Dan Wesson Firearms • 5169 State Hwy 12, Norwich, NY 13815
Phone: 607-336-1174 • Fax: 607-336-2730 • www.cz-usa.com